

WELCOME TO LANDAL GRØNHØJ STRAND



Dear guest,

We look forward to welcoming you as a guest at Landal Grønhøj Strand.

To help you prepare, we've put together this flyer for you. If you have any questions or comments, please contact us.

We hope you have a good journey and look forward to your arrival.

Kind regards,
Team Landal Grønhøj Strand



Good to know

Arrival and departure

You can check in at the Information Desk from 3:00 PM. Here, you will receive your bungalow number. If you arrive outside reception opening hours, you can find the key and information in the cabinet. This is found on the wall to the right of the entrance to the reception. The code for the cabinet is: 9888#.

Please leave your bungalow by 10:00 AM.

Payment methods

In our park, you can pay with Danish kroner, VISA, Maestro and MasterCard.

Currency

Denmark has its own currency, the Danish krone.

Remember you can use our swimming pool and outdoor activities before check-in on the day of arrival. The sports hall can only be used after check-in.

TIP!





Internet

There is free Internet in your bungalow and in most areas at the park.

Pets

If you haven't booked a pet, call the Contact Centre before you arrive on **+45 7023 2030** (normal call charges apply) to add a pet to your booking (cleaning surcharge dkr. 347).

Smoke-free zone

All bungalows and indoor public areas are smoke-free zones.

Water

You can drink the water from the tap.

Parking

There is a parking place near your bungalow.

You can borrow a luggage carrier if you cannot carry your things to the bungalow.

Electric cars

You may charge electric cars at our charging point near the football pitches.

A voucher costing DKK 50 is available from reception.

Use of electricity and water

Unlike in our other parks, we charge you separately for your use of public utilities (water, gas and electricity), based on actual use during your stay. Consumption is automatically (digitally) measured and at the end of your stay you pay at the park in Danish krone. The rates for using public utilities are: Electricity DKK 2.75 per kWh (around € 0.37 /kWh). Water DKK 10,4 per 0.1 m³ (around € 1.4/0.1 m³ water). Electricity DKK 1.95 per kWh (around € 0.26/kWh). Prices subject to change. Example: for normal use during a week's stay for four people, the average charge is € 130.

Plug

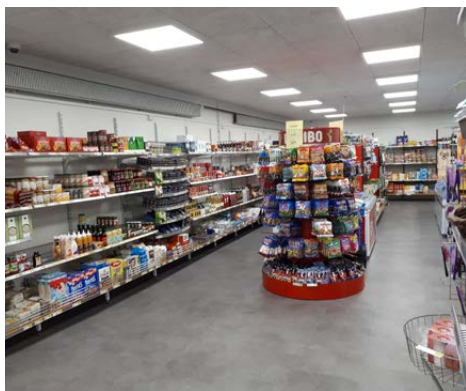
In Denmark, a continental plug with two pins is used. Most plugs are not earthed, so an adapter may be useful.

Bed linen and towel packs

On arrival, there is a pack for each guest containing sheet, duvet cover and pillow case.

The bungalows

Most of our bungalows are private property, so they do not all look alike. The bungalows all have their own unique charm and interior design.



Parkshop

In the Parkshop, you will find everything you need. Start the day with freshly baked bread from the local baker and choose from the wide range of fresh produce, vegetables, fruit, drinks and snacks and much more!

Food and drink

Don't fancy cooking this evening? Enjoy fresh pasta and pizzas or a juicy steak at Restaurant Café Lido at the park. The kids can choose their favourite dish from the children's menu. That's delicious and easy dining with the whole family.



Activities at the park

Swimming

We have a large indoor swimming pool with an amazing slide, a paddling pool and a spa for 12 people. In the summer, you can also take a dip in our outdoor swimming pool. Water fun for the entire family! You can also warm up in our sauna. Lockers are available for DKK 10.



Specially for the kids

The changing rooms have changing tables and small baths. You can buy swim nappies at the Parkshop.

Sports centre

Challenge the family to a game of badminton, basketball, handball or volleyball. Or what about a game of squash? Hours of fun for young and old in the sports centre! You can hire everything you need for a sporty day at the Parkshop in the park. If the shop is closed, you can go to reception.

Midget golf

Challenge each other to a game of midget golf at our lovely midget golf course for DKK 40 per person.

Outdoor sports

On our multi-sport playing field, you can play football, handball, basketball as well as street hockey. There's also a tennis court. You can hire equipment from the Information Desk.



Children

The children can spend many happy hours in the playground on the big bouncy castles or in the indoor play area. Even the youngest ones can enjoy themselves in their own children's play area. Climbing and clambering on the climbing frame, whizzing down the slides and building sandcastles in the sandpit.



The park's surroundings

The beach (400 metres)

The park is just 400 metres from one of the loveliest beaches in Denmark. Uniquely, you can drive or cycle along the beach all the way to Løkken - it's difficult to imagine a nicer car drive.



The city of Løkken (10 km)

Løkken is a bustling town which has it all: shops, nice restaurants, art and culture and child-friendly beaches.

Aalborg Zoo (44 km)

You can spend a great day out with the family at Aalborg Zoo. Get up close to the polar bears and African elephants and say hi to dangerous tigers and large orang-utans.



Nordsø Oceanarium (43,5 km)

Discover the various sea creatures, from catfish to playful seals. Follow the Oceanarium's sea creatures into the depths, once they are fed. Take your family on an expedition on land and in the sea.

Fårup Sommerland - 59 km from the park

Close to the beach, and yet completely out in the woods, you will find the Fårup Sommerland Amusement Park with more than 60 rides. For the past four years, Fårup has been one of Europe's three best theme parks - and is one of Denmark's biggest tourist attractions with plenty of wild, funny and crazy wet activities for the whole family.

Read more about the region at www.visitjammerbugten.dk

Save time and money and buy tickets for local attractions. We sell tickets for Fårup Sommerland, and Nordsø Oceanarium.

TIP!



Directions

By car from the south on the E45

Take exit 8 Tylstrup towards road no. 559 and Tylstrup/Blokhush/Hjallerup.

At the roundabout, take the fourth exit to Luneborgvej/road no. 559.

At the roundabout, take the first exit to Luneborgvej/road no. 515/road no. 559 - drive 6.6 km.

At the roundabout, take the second exit to Blokhushvej/road no. 559 - drive 9.9 km.

At the roundabout, take the first exit to Omfartsvejen/road no. 55 - drive 4.8 km.

On the roundabout, take the second exit to Tinghøjgade/road no. 55 - drive 4.1 km.

Turn left and follow Grønhøj Strandvej - drive 2.3 km.

Turn right and follow Redningsvejen Syd - 1.0 km.

Turn right and follow the Ingeborgvej.

The park is on your right.

By car from Hirtshals

Follow the E39.

Take exit 2-Hjørring N to Bjergby/Hjørring N.

At the roundabout, take the second exit to the Ringvejen/road no. 190 - drive 3.4 km.

Turn right towards Hjørring N and follow Vellingshøjvej - drive 3.4 km.

Turn left at the T junction and follow the Krustrupvej/road no. 55 - drive 2.6 km.

At the roundabout, take the first exit to Løkkensvej/road no. 55 - drive 16.7 km.

At the roundabout, take the second exit, stay on the Løkkensvej/road no. 55 - drive 1.7 km.

At the roundabout, take the second exit, stay on the Løkkensvej/road no. 55 - drive 5.1 km.

Turn right and follow Grønhøj Strandvej - drive 2.3 km.

Turn right and follow Redningsvejen Syd - 1.0 km.

Turn right and follow the Ingeborgvej.

The park is on your right.

By car from Frederikshavn

Drive in the direction of Aalborg to Europavej/E45.

Turn right towards Brønderslev and follow Thodesvej/road no. 585 - drive 20.7 km.

At the roundabout, take the first exit to Hjørringvej/road no. 553 - drive 8.6 km.

Turn left and follow Vrejlev Klostervej/road no. 593 - drive 6.2 km.

At the roundabout, take the second exit and stay on Vrejlev. Klostervej/road no. 593 - drive 2.8 km.

At the roundabout, take the second exit to Vråvej/road no. 593 - drive 15.5 km.

Turn left and follow Løkkensvej/road no. 55 - drive 1.1 km.

At the roundabout, take the second exit, stay on the Løkkensvej/road no. 55 - drive 1.7 km.

At the roundabout, take the second exit, stay on the Løkkensvej/road no. 55 - drive 5.1 km.

Turn right and follow Grønhøj Strandvej - drive 2.3 km.

Turn right and follow Redningsvejen Syd - 1.0 km.

Turn right and follow the Ingeborgvej.

The park is on your right.